

Airsuspended stretcher platform
with pneumatic lateral movement device
for Kartsana powerBRAVA



BRAVOBASE

HOVERBOARD®

With the new **Hoverboard BRAVOBASE** we create
a new dimension of protecting patients **and** paramedics.



The new BRAVOBASE is a customized airsuspended Hoverboard for the Kartsana powerBRAVA with a total payload of more than 500 kg/ 1100 lbs.



Not only heavyweight patients, but also newborn babies in incubators experience an easy and painless ride, without paramedics becoming patients themselves.



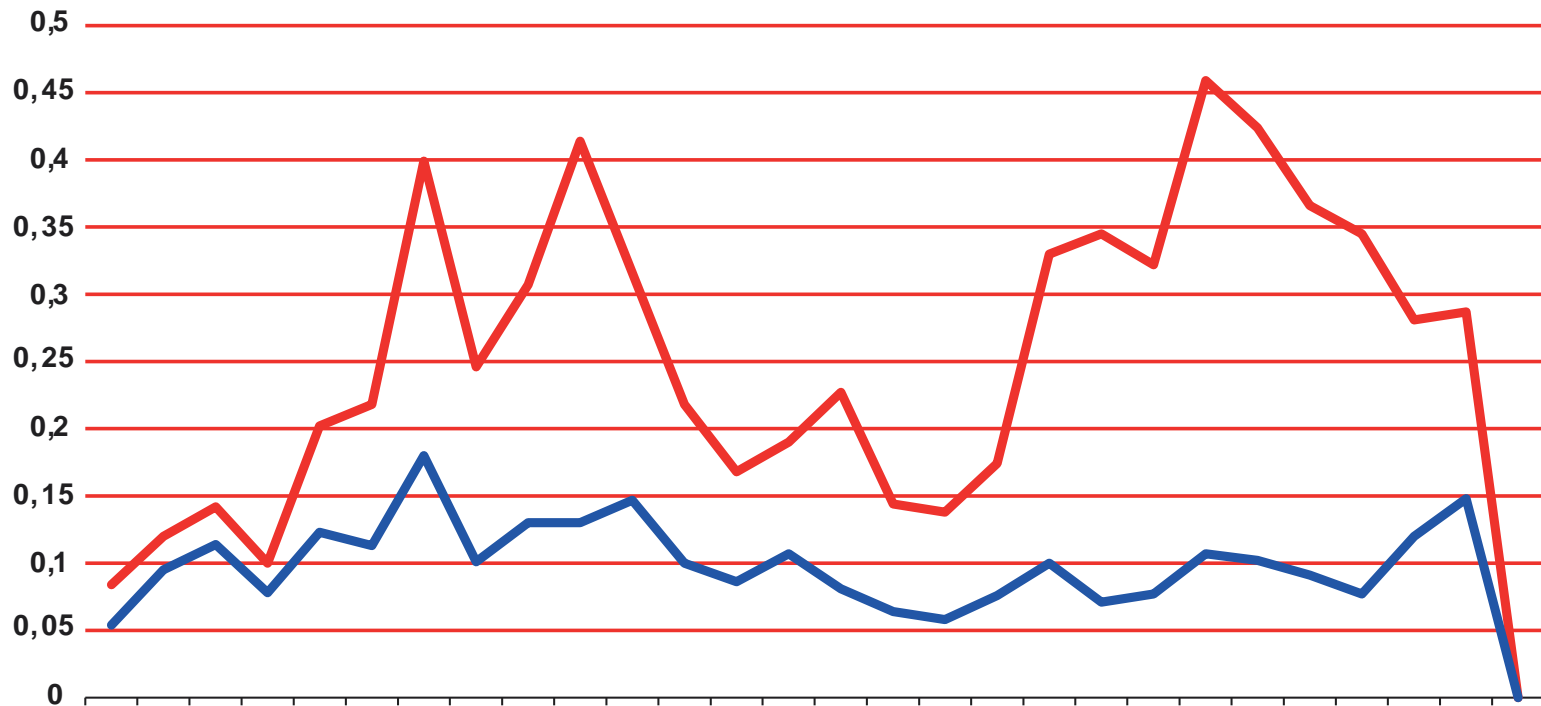


The fully automatic air suspension absorbs most of the incoming vibration energy.

This provides the patient with optimum protection against road shocks, without the well-known nausea arising through large oscillation paths.

Besides, there is neither any tilt in curves or nodding of the patient's head when braking

Depending on road conditions, Hoverboard can absorb up to 80% of the impacts, but at least 50%.



Red line: Acceleration values on the vehicle floor under the hoverboard

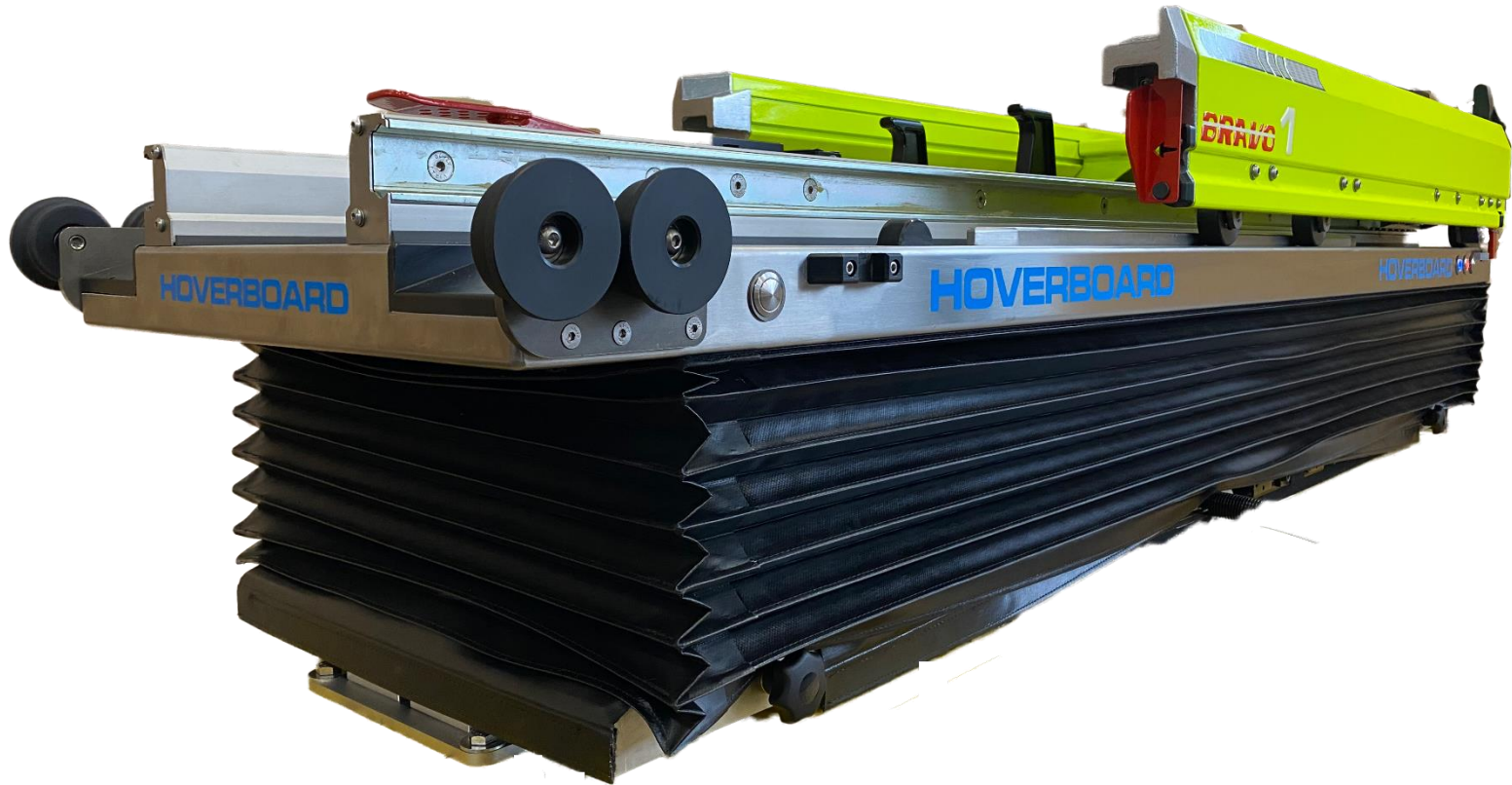
Blue line: Acceleration values at the plate surface of the hoverboard

Advantages for the patient

HOVERBOARD®

Due to the higher position in the vehicle, the patient is at eye level with the physician or paramedic, as in a hospital bed.

The oppressive feeling of lying on the ground is completely eliminated.

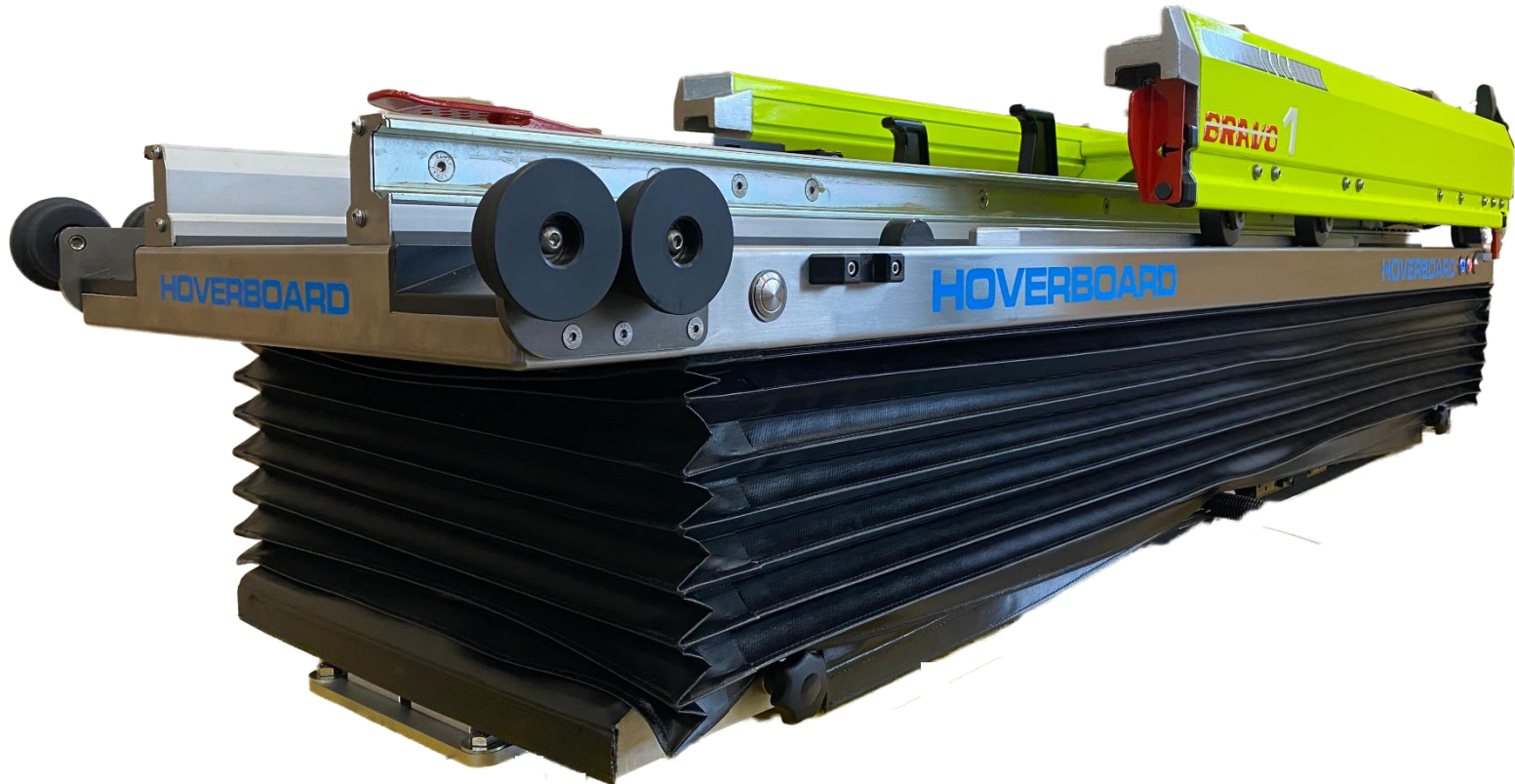


Advantages for physician and paramedic

HOVERBOARD®

The height adjustment allows the patient to be brought into the perfect position for the required treatment.

This means that treatment can always be carried out in an upright posture or alternatively in a seated position and the spine is significantly relieved.



The hoverboard is perfectly prepared for mounting the Kartsana powerBRAVA:

- The installation of the Kartsana powerBRAVA in the vehicle is much easier.
- The additional staircase for box vehicles is also omitted because the hoverboard is mounted further forward.
- The power supply for the powerBRAVA is routed through the hoverboard.



- When the stretcher is loaded in and locked, the hoverboard automatically adjusts to the patient's weight and lifts to the level for optimal suspension comfort.
- When switching off the ignition or the main switch, the Hoverboard lowers gently.
- **The Hoverboard BRAVOBASE also lowers by unlocking the Kartsana powerBRAVA.**
- So the patient only has to be pushed, but never lifted.

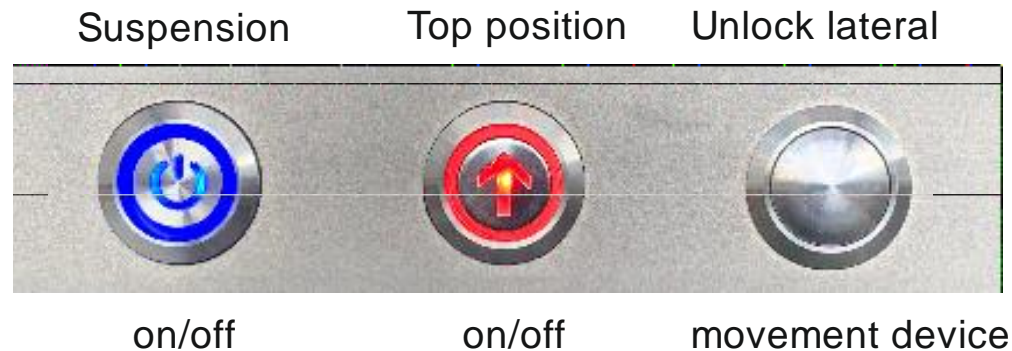


By pressing the main switch, the hoverboard automatically adjusts to the patient's weight and rises to the level for optimal suspension comfort, the switch glows blue.

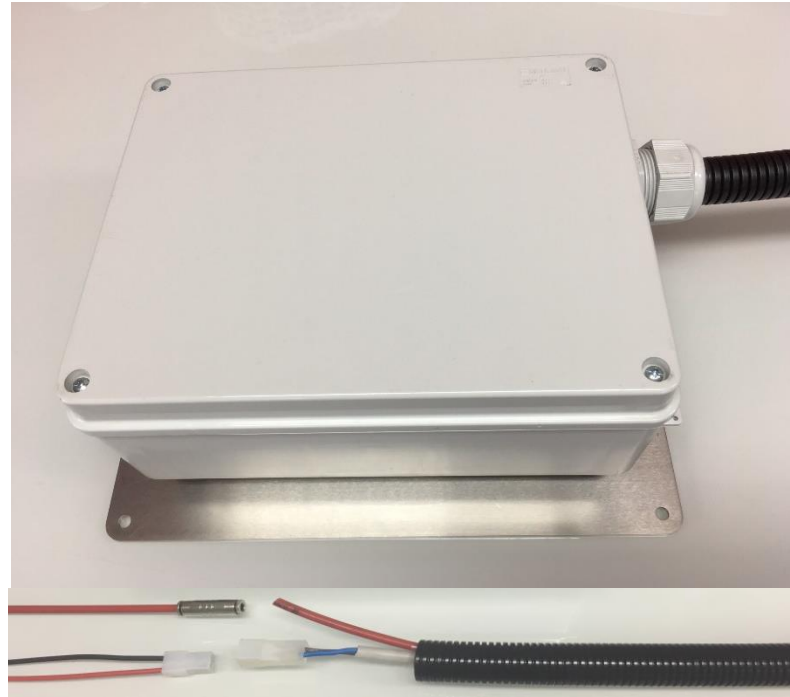
If the switch for the reanimation position is also pressed, the hoverboard is lifted within seconds into the highest position and remains there rigid, the switch lights up red.

Pressing one of the pushbuttons (front or backside) unlocks the cross motion device. As long as you press, you can move the Hoverboard sideways in 8 positions, each 32mm. Releasing the button locks the Hoverboard in the nearest position.

If required, the hoverboard can also be controlled via the vehicle panel (ceiling panel).



For utterly noiseless operation Hoverboard provides an optional hermetic box with an external compressor.



This box is mounted on the underside of the vehicle with a stainless steel mounting plate.

The compressor then takes in clean air from the vehicle interior through the black armoured tube and compresses it back through the pressure tube.

This prevents the intake of dirty and salty outside air.

At the DEKRA Automobil-Testcenter in Klettwitz/Germany
the new Hoverboards

have been successfully crash – tested.

All new versions **with and without cross motion device**
are according to the latest standards

EN 1789:2014

EN 1865-5:2012

ECE R17 (Crash with 20 g)



Alles im grünen Bereich.
